

TESSUTI . FABRICS CAT. A



MOON LIGHT 104 CANAPA



MOON LIGHT 10 PORTOFINO



MOON LIGHT 14 AVIO



MOON LIGHT 20 TORTORA



MOON LIGHT 04 CAMELLO



MOON LIGHT 03 DUNE



MOON LIGHT 11 VISONE



MOON LIGHT 100 CIOCCOLATO



MOON LIGHT 18 NERO

TESSUTI . FABRICS CAT. B



HAVANA 1 BEIGE



HAVANA 12 TORTORA



HAVANA 622 CRETA



HAVANA 2 FANGO



HAVANA 10 ROSSO



HAVANA 17 AVIO



HAVANA 205 ANTRACITE

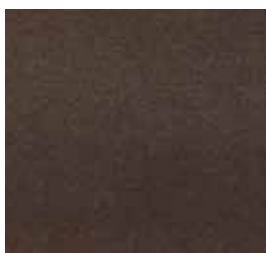


OLIVER 23 SABBIA

TESSUTI . FABRICS CAT. B



OLIVER 05 CASTAGNA



OLIVER 2012 MARMOTTA



VELVET 09 MELANZANA



VELVET 04 CRETA



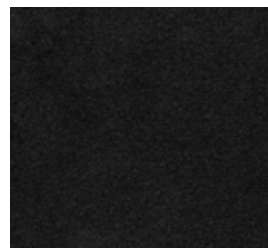
OLIVER 2002 MOKA



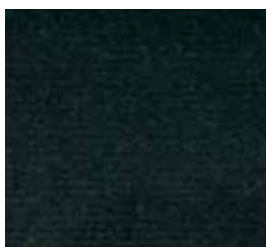
OLIVER 14 ZUCCA



VELVET 08 CIOCCOLATO



VELVET 12 PRUSSIA



OLIVER 1402 MUSCHIO



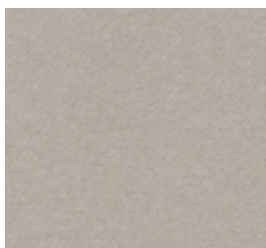
OLIVER 54 COBALTO



VELVET 11 GRIGIO



VELVET 1708 TERRA



OLIVER 29 GHIACCIO



OLIVER 1404 GHISA



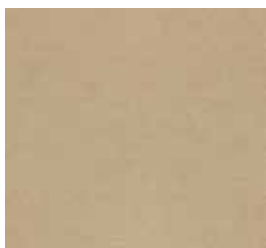
VELVET 28 MATTONE



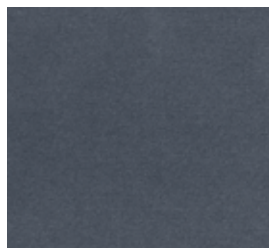
VELVET 35 CIPRIA



VELVET 02 PANNA



VELVET 1720 BEIGE



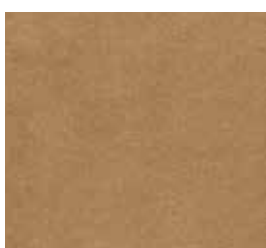
VELVET 111  
CARTA DA ZUCCHERO



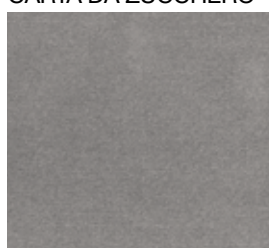
VELVET 1004 SENAPE



VELVET 1709 MILITARE

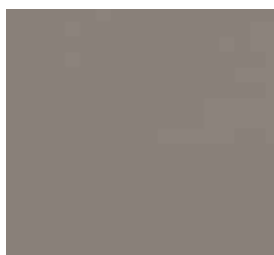


VELVET 1715 CAMMELLO



VELVET 19 CROMO

**PELLI . LEATHERS CAT. A**



CLAYTON 1660 GRIGIO



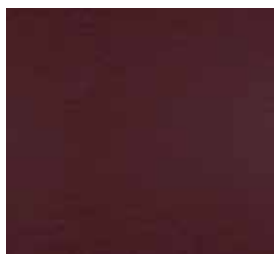
CLAYTON 1639 LUMIERE



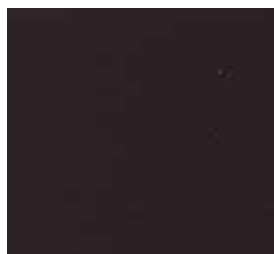
CLAYTON 1627 TORTORA



CLAYTON 1101 NERO



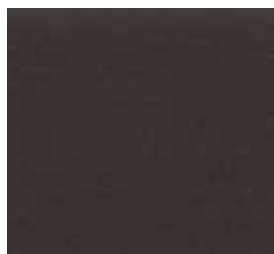
CLAYTON 1108 CHIANTI



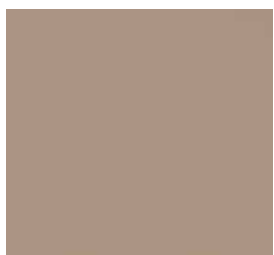
CLAYTON 1147 DARK



CLAYTON 1179 GESSO



CLAYTON 1216 FANGO

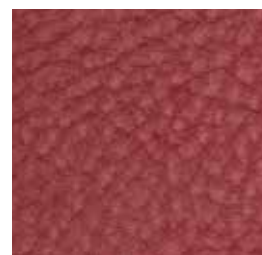


CLAYTON 1226 BEIGE

**PELLI . LEATHERS CAT. B**



CAMOSCIO 8 FANGO



CAMOSCIO 16 PORTOFINO



CAMOSCIO 21 NAMIBIA



CAMOSCIO 23 DUNE



CAMOSCIO 26 GRIGIO



CAMOSCIO 31 PERLA



CAMOSCIO 27 TORTORA



CAMOSCIO 32 CORDA



CAMOSCIO 34 MOKA

ESEMPI DI STAMPA RIPRODUCIBILI SU TUTTO IL CAMPIONARIO . PELLE, NABUK, CAMOSCIO  
EXAMPLES OF PRINTS REPRODUCIBLE ON ALL FABRICS . LEATHER, NUBUCK, SUEDE.



F/11 STAMPA JUBILEÉ



F/10 STAMPA KORDA



STAMPA KUBA

## NABUK



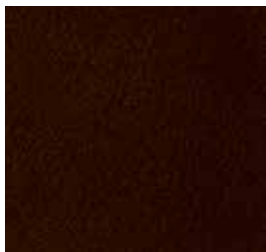
NABUK 2117 FERRO



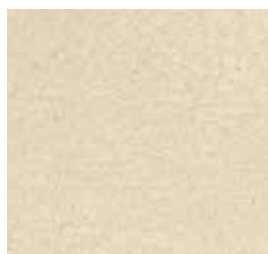
NABUK 2116 TABACCO



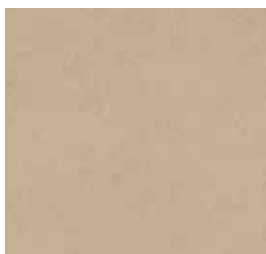
NABUK 2115 TORTORA



NABUK 2114 CIOCCOLATO



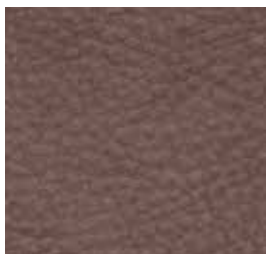
NABUK 2100 GESSO



NABUK 2101 SABBIA



NABUK 2118 CANAPA



NABUK 10 ROSA ANTICO



NABUK 18 BLU



NABUK 21 ROSSO



NABUK 22 OCRA

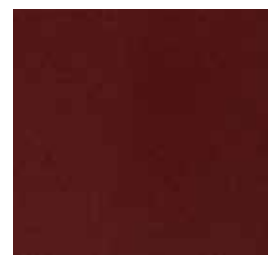


NABUK 24 MUSCHIO

## CUOIO . LEATHER



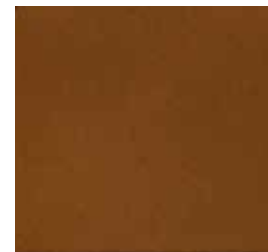
CUOIO BEIGE



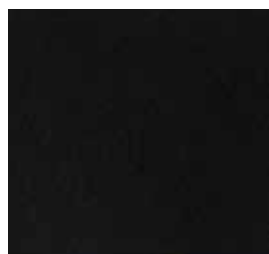
CUOIO BORDEAUX



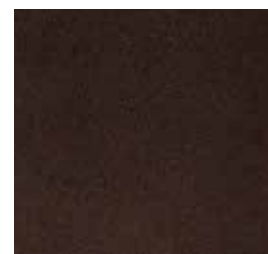
CUOIO GRIGIO



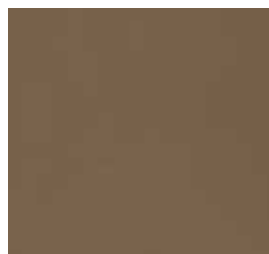
CUOIO INVECCHIATO



CUOIO NERO



CUOIO TESTA DI MORO



CUOIO TORTORA

DAYTONA è un marchio registrato da SIGNORINI&COCO.

É vietato l'utilizzo improprio del marchio e di tutti i suoi componenti.

Tutte le dimensioni riportate nella sezione tecnica sono in cm, approssimative e con possibilità di variazioni (tolleranza del +/-2%). L'azienda si riserva il diritto di effettuare modifiche e aggiornamenti tecnico-produttivi al presente catalogo senza preavviso.

Le immagini e i colori dei prodotti stampati nel catalogo sono puramente indicativi.

DAYTONA is a SIGNORINI&COCO registered trademark. Improper use of the trademark and all its parts is forbidden.

All the dimension included in the technical description are in cm, approximate and subject to change (with a tolerance of +/-2%).

The company preserves the right to change the technical features of the products shown in this catalogue without notice as a result of technical updates. The images and the colours of the products printed in this catalogue are purely for information.